



OFFERS IN THE REGION OF

£650,000

Loder Street

London, SE15 2LF

GARETH
JAMES

PROPERTY SUMMARY

Spanning 1,244 sq ft across three well-proportioned levels, this end-of-terrace three-bedroom home has been beautifully maintained throughout and enjoys an east-facing rear garden and a tucked away additional study room.

3



1



2

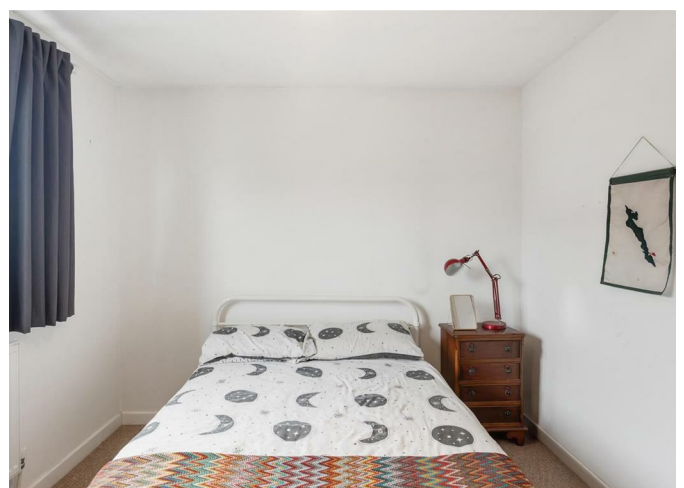
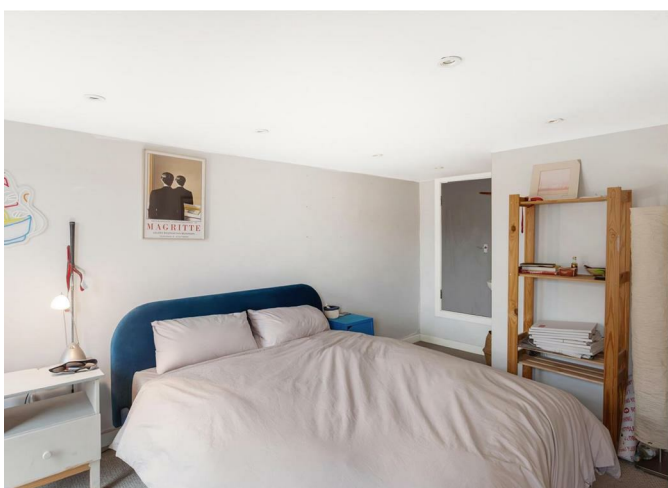
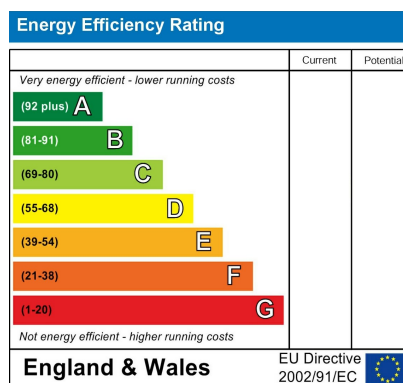








Illustration for identification purposes only. Not to scale.
Floor Plan Drawn According To RICS Guidelines.



Agents Note: Whilst every care has been taken to prepare these particulars, they are for guidance purposes only. All measurements are approximate and are for general guidance purposes only and whilst every care has been taken to ensure their accuracy, they should not be relied upon and potential buyers/tenants are advised to recheck the measurements

**GARETH
JAMES**

OFFICE ADDRESS
129 Bellenden Road
London
SE15 4QY

OFFICE DETAILS
02077324330
sales@garethjames.com
<https://www.garethjames.com/>